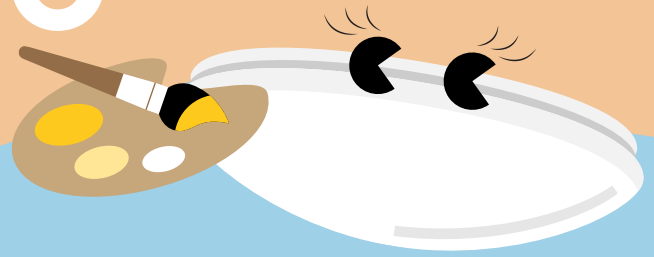


Lena Vario

Circular IP44
LED Bulkhead



New

Meet Lena Vario
Attentive and adaptable,
Lena Vario lights up
corridors whenever needed

- Three colour temperatures in one product - simply select 3000 K (warm white), 3500 K or 4000 K (neutral white) to suit the application
- Choose between 1400, 1900 and 2500 lm light output
- Optional: Integrated microwave presence sensor maximising the energy saving potential
- Direct replacement for 2 x 18 W, 2 x 26 W and 2 x 36 W CFL
- Save up to 55% energy compared with CFL fittings
- Quality PMMA diffuser for an even light distribution
- Reliable integrated LED technology, ensuring maintenance-free installation and a long lifetime
- Quick and easy installation, loop-in loop-out possible



THORN
eco



CCT switch
(3000 K, 3500 K
and 4000 K)



1400, 1900 and
2500 lumens,
up to 93 lm/W



IP44: splash
resistant



Size: 320 and
380 mm



Presence
sensor
optional



50 000 hours
lifetime

Ideal for...



Stairways



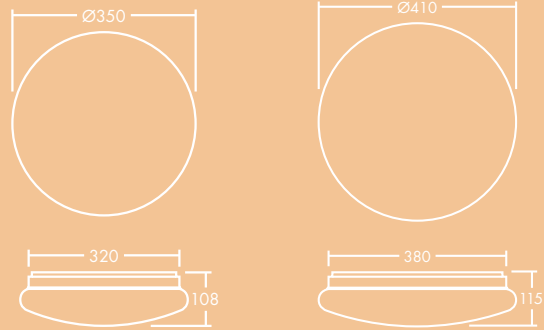
Bathrooms



Circulation
corridors

Light source information

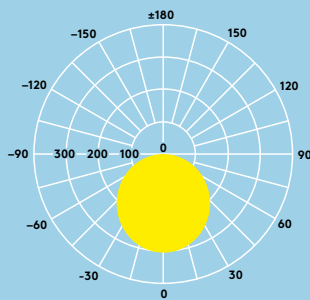
- 1400lm (15W), 1900lm (21W), 2500lm (30W), up to 93lm/W
- Lifetime 50 000 hours (L80, Ta 25°C)
- Colour temperature 3000 K, 3500 K and 4000 K in one product
- Beam angle: 120°
- CRI 80
- MacAdam (initial): 5 step



Lighting distribution

Lena Vario 2500 lm, 4000 K
cd/klm ULOR: 2 % DLOR: 98 % LOR: 100 %

83 lm/W



Installation/Mounting

- Suitable for wall or ceiling mounting
- Quick and easy installation thanks to the twist-and-lock opening mechanism and the piano key terminal for wires up to 2.5 mm²

Material/Finish

Backplate: steel, white finish
Diffuser: PMMA, opal

Specification

- Class II electrical
- IP44
- IK04
- Ambient temperature range: -20 to 40 °C
- ENEC certified driver

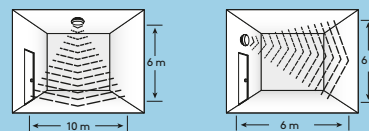
Ordering guide

Beschreibung	Gewicht (kg)	Art. Nr.
LENA VARIO LED 320 1400 830/35/40	0,62	96631862
LENA VARIO LED 320 1400 830/35/40 MWS	0,67	96631863
LENA VARIO LED 380 1900 830/35/40	0,83	96631864
LENA VARIO LED 380 1900 830/35/40 MWS	0,88	96631865
LENA VARIO LED 380 2500 830/35/40	0,85	96631866
LENA VARIO LED 380 2500 830/35/40 MWS	0,9	96631867

Presence sensor

Lena Vario's microwave sensor option will ensure that light is only delivered when needed. This sensor is a motion switch, which turns on the light on detection of movement, and turns off after a pre-selected hold-time when there are no people around. A daylight sensor is also built-in to prevent the light switching on when there is sufficient natural light.

Sensor range



at 100 % sensitivity

Controllability

📶 Sensitivity	10 %, 50 %, 75 %, 100 %
🕒 Time	5 s, 90 s, 5 min, 15 min
✳️ lux	10 lux, 20 lux, 50 lux, disable