

THORN

PopPackPro

The professional's choice.
Faster. Simpler. Better.



PopPackPro

Faster. Simpler. Better.

Packed full of proven and innovative features, the PopPackPro sets new industry highs for batten lighting

New PopPackPro raises the bar for batten lighting. Quick and intuitive to install and simple to upgrade, it uses the very latest high-frequency (HF) technology for instant light.

PopPackPro is a solution that addresses the twin concerns of cost and quality. Ease and simplicity of installation reduce up front costs for the installer by significantly reducing installation time; energy saving HF technology drives down running costs for the end user; all underpinned by the build quality guaranteed in a Thorn product.

Although it's a very economical solution, PopPackPro is elegant to look at so you'll have no worries about installing it in the most visible, public areas of commercial and educational buildings as well as more traditional applications such as warehouses and domestic environments - finally there is an energy efficient solution that delivers back of house value but looks good enough to be installed front of house.

Just pop the batten into its patented mounting bracket, click & twist and the job is done. Before you know it you're on to your next job - with time to spare.



Twist Lock Technology

Click and twist and the job's done



Quick-Fix Secure Diffuser

Simple, secure and one diffuser fits all



Plug + Play Modules

Presence and daylight detection



No Fuss Rapid Install

Simpler, quicker installation sequence

Faster

Whatever industry you're in - time equals money. PopPackPro is much faster to install than its competitors - and indeed some of our own earlier products! Quick installation means lower labour costs. That's a great start.

Simpler

PopPackPro is simplicity itself. You don't need to be highly skilled to install it. You don't even need many tools. And it gets better...

Better

Your client wants to use less energy and optimise the life of fluorescent lamps - all easily achievable with PopPackPro. With its HF electronic ballast and modular presence and daylight controls, PopPackPro tells an excellent energy story. With its attractive attachments delivering an overall best in class optical performance, you'll never look back..

The most flexible batten lighting system yet

Think again about HF technology

You might not normally use a fluorescent batten at the side of a corridor ceiling. You might not consider a batten for the entrance area to a new building. You might think of HF technology as more expensive and therefore not suitable for public sector projects. We believe we can change your mind.

Raise your standards

Around 50% of batten installations are with a diffuser and prismatic diffusers are the standard of choice. However, the new PopPackPro diffuser raises the standard:

- Acrylic material makes for longer life and no discolouration
- Unique prism structure delivers outstanding optical performance
- Appealing curves make it suitable for more applications
- Patented design suitable for single and twin lamps
- Patented fixing mechanism for simple, swift, secure installation

Designed to perform

Unlike most competitors, the PopPack Pro has purpose - designed T16 (T5) and T26 (T8) variants. The resulting optic performance is so good that it needs fewer luminaires. So that's less capital cost, less installation cost and less running and maintenance costs. Using conversion kits to retrofit T26 (T8) to T16 (T5) can lead to loss of designed performance for the luminaire. With purpose designed luminaires you are guaranteed the performance demanded by the lighting design. In addition the 600mm 55W lamp version 'Compact' has a surprisingly high light output approaching that of a single 58W batten making it perfect for lighting task areas where space is limited.

Cornice - no middle ground

The new 'Cornice' attachment is an ideal choice for corridors allowing luminaires to be mounted to the side, rather than the middle of the ceiling. The right-angled design reduces the potential for dirt traps and the simple lines make them easy to clean – perfect for healthcare environments where patient comfort and safety are paramount. Add the unique modular sensor controls to create a lighting installation with reduced running costs.

Take control

PopPackPro's innovative plug-in modules give you real flexibility and control. For the first time, you can add functionality to any standard batten as and when you choose. For example:

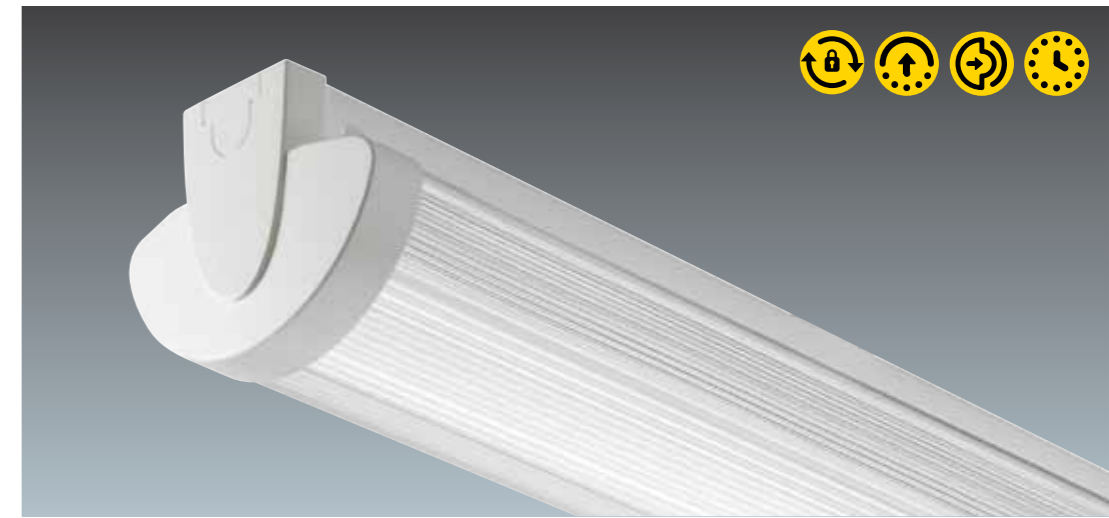
- Control the light when people are absent
- Provide emergency light when the mains fails*

Your choice

Innovation comes as standard with PopPackPro. Whether it's ceiling mounted, trunking or suspended PopPackPro is suitable for all. Moreover, the award-winning Fix-Express mounting bracket which comes as standard on all versions, has been designed specifically to be compatible with BESA box mounting, providing a neat direct fit.

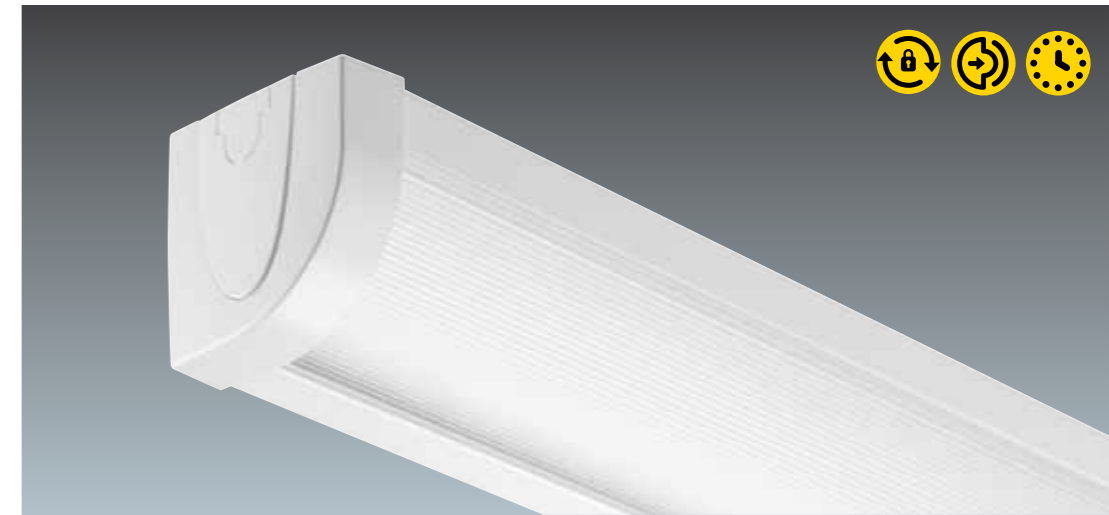
PopPackPro TwinLine

- Contemporary design
- New Quick-Fix secure fitting
- Best in class optical performance
- Compatible with Plug and Play modules



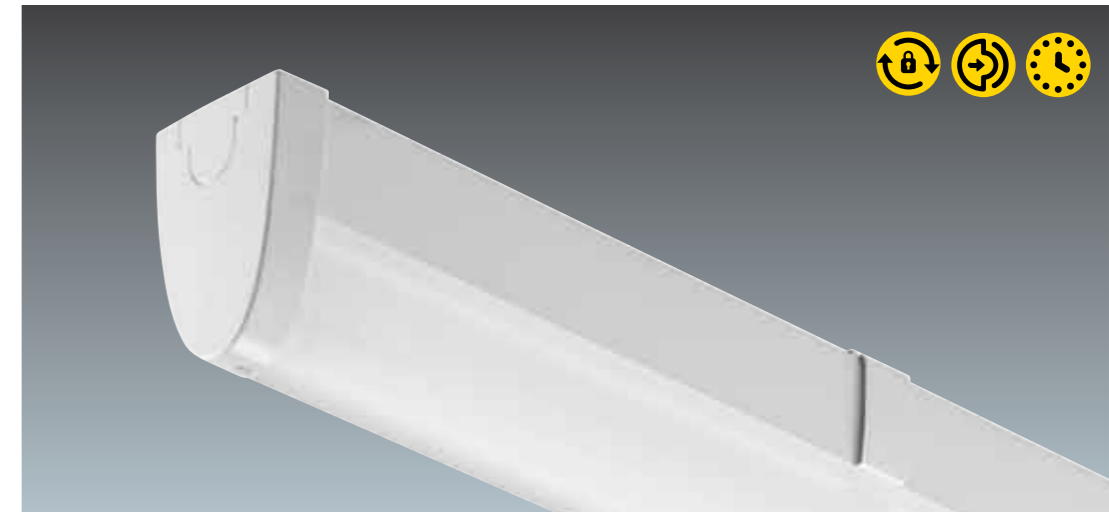
PopPackPro Cornice

- Asymmetric light distribution
- Simple lines - easy to clean
- Ideal for corridor illumination
- Compatible with Plug and Play modules



PopPackPro ClipLine

- Discreet T16 (T5)
- Opal finish
- Outstanding optical performance
- Compatible with Plug and Play modules



PopPackPro Compact

- Big illumination (55W) from compact batten (600mm)
- Lightweight - easy to handle and carry
- Ideal for smaller spaces
- Compatible with Plug and Play modules



*Emergency modules require a permanent live feed

Performance

Designed with a choice of high performance optical controllers to provide different lit effects to give the right light whatever the application.

Efficiency

At the heart of the new PopPack is ease and speed of installation saving time and money. Attachments for sensors and emergency expand the flexibility with minimal effort. Optimised optics (see table right) reduce energy requirements and therefore CO₂ emissions.

Comfort

Modern styling combined with a choice of attachments offers consistency throughout the application space, providing satisfaction and stimulation.

1x58W	New PopPackPro	Original PopPack	Competitor A	Competitor B	Competitor C	Competitor D
LOR	93%	78%	84%	82%	81%	82%
UGR	15	18.1	19.9	18.8	16.9	
SHR (nom/max)	2.00/2.10	1.75/1.78	1.5/1.68	1.5/1.7	1.5/1.74	

1x35W	New PopPackPro	Original PopPack	Competitor A	Competitor B	Competitor C	Competitor D
LOR	93%	n/a	90%	na	90%	89%
UGR	15.6	n/a		na	15.7	
SHR (nom/max)	1.50/1.73	n/a		na	1.5/1.68	

Competitive photometry sourced from published, commercially available material.

PopPackPro brings together over 50 years' experience, and today's cutting-edge technology.

Fluorescent battens have been around since the mid 1950s and have remained essentially unchanged in all that time. With PopPackPro we went back to the drawing board, driven by the desire to make things faster, simpler and better.

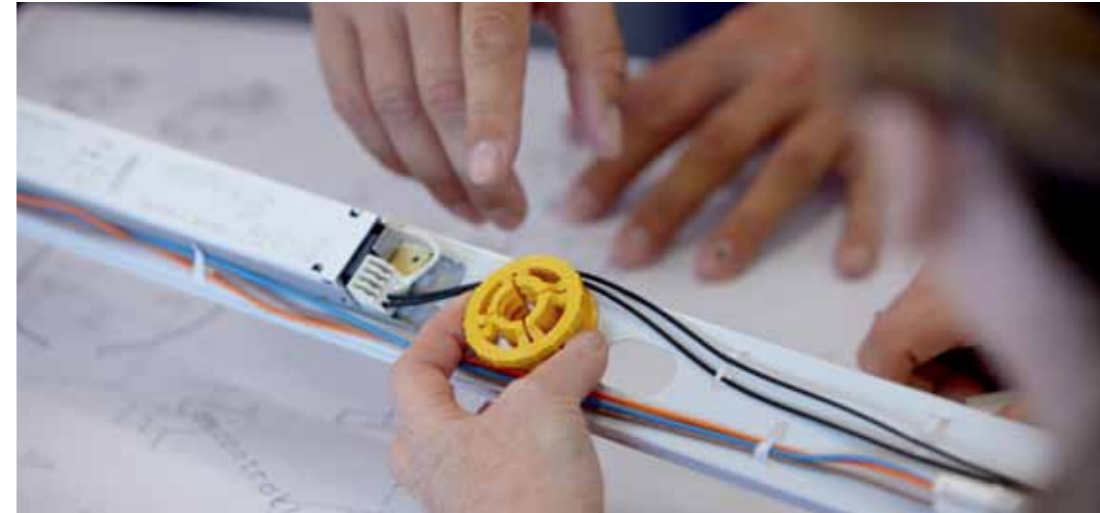
PopPackPro brings together over 50 years' experience since inventing the fluorescent batten, and today's cutting-edge technology. Our design team have spent many hours creating a high-class product at an economical price with purpose-built T26 (T8), T16 (T5) and Compact Fluorescent versions.

The end result is great to look at, easy to install and brilliant in its functionality. Faster. Simpler. Better.



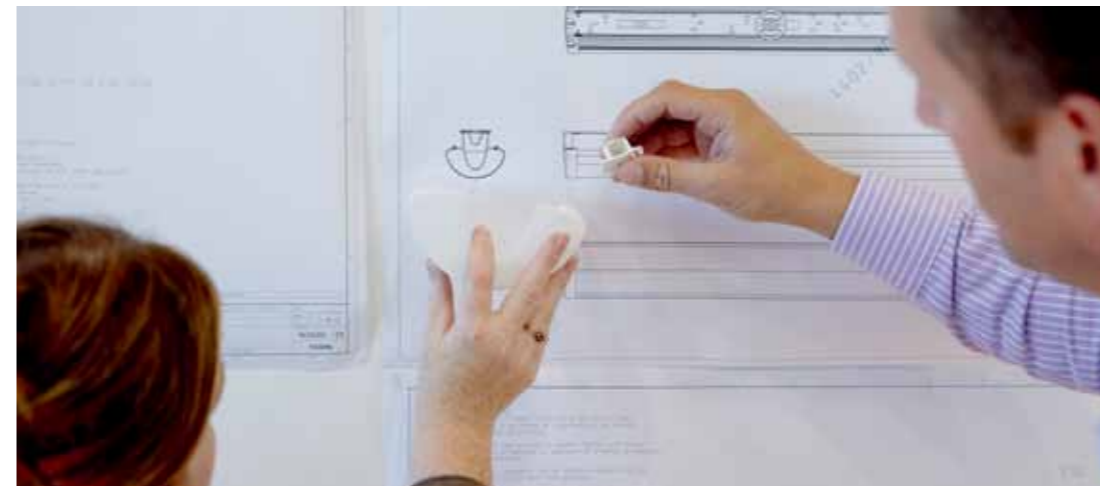
Quick-Fix Secure Diffuser

We have completely redesigned the way the diffuser fixes to the batten. The patented new fixing is brilliant in its simplicity, ease of install and security.



Twist Lock Technology

Trials have shown that a new PopPackPro batten can be installed 50% faster than competitors.



Plug + Play Modules

To add flexibility we've designed emergency and presence-detection modules.

Designed to perform

1 Easy to fix

Trials have shown that a new PopPackPro batten can be installed 50% faster than competitors. First fix involves attaching two lightweight BESA compatible plates to the mounting surface. The second fix can be done by one person using the 'FixExpress' mechanism incorporated in every PopPackPro. Less time, fewer people and reduced demand on skilled labour makes installation much more cost-effective.

2 One diffuser fits all

Just one diffuser for both single and twin lamp battens means a common appearance and a reduction in the number of installed parts.

New diffuser fixing design

After extensive research we have completely redesigned the way the diffuser fixes to the batten. It's now simpler, quicker and more secure.

3 Easy access

The innovative body design means all the fixing and wiring actions are carried out on a flat spine plate. This makes it much easier to gain access compared to the traditional U-shaped body channel.

4 Electrical connection

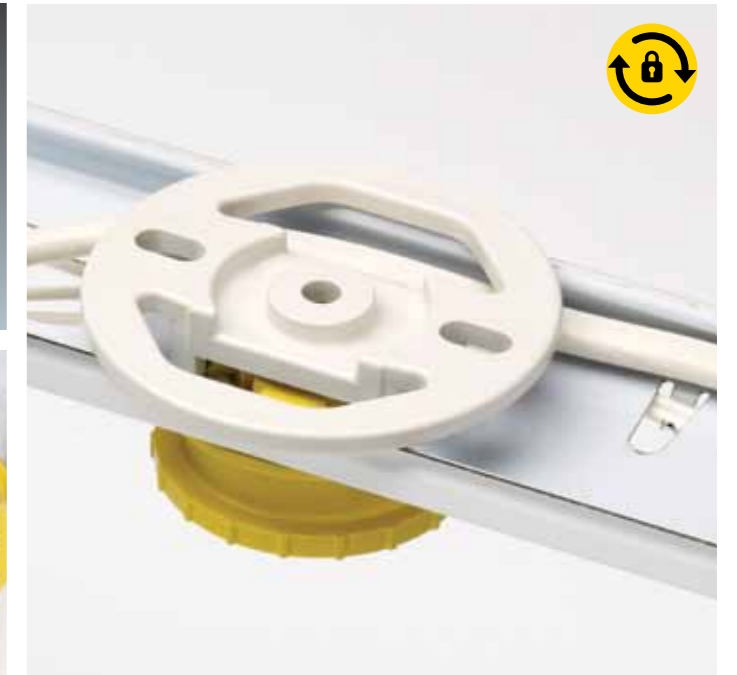
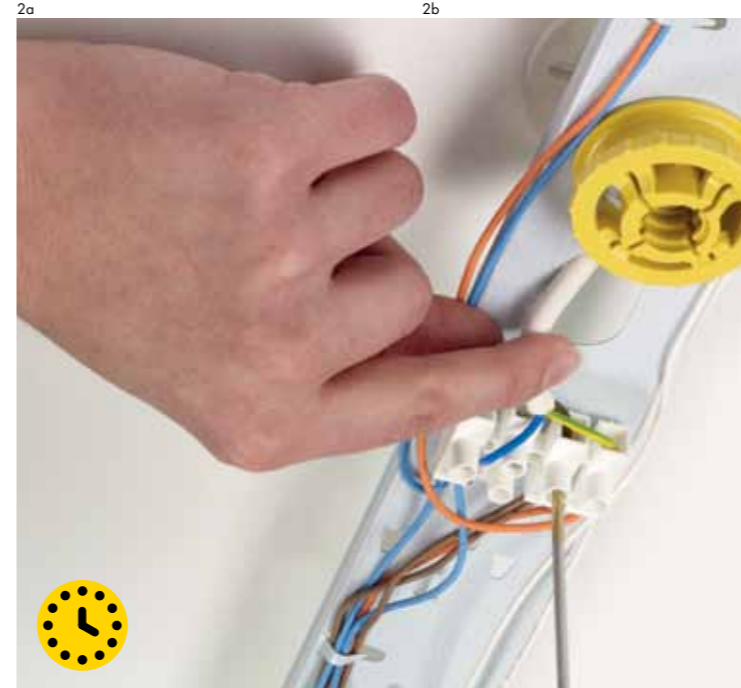
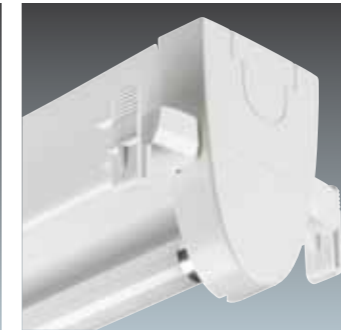
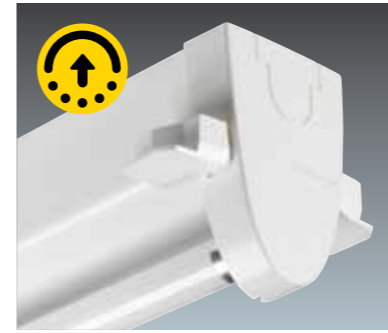
Our extensive research showed that installers hate wasting time fixing wiring faults after the event. That's why the PopPackPro has a screw terminal block which ensures conductors are gripped securely and permanently.

5 Plug-in 'emergency' modularity

All you need is a permanent live feed to the fitting, and you can have an emergency batten in seconds. Our purpose-built, plug-in LED module can be fixed to the end of the luminaire, at installation or at a later date, to give you a fully compliant 3-hour emergency fitting.

6 Plug-in lighting control modularity

You can also introduce occupancy and ambient light-level detection using a similar plug-in module to the LED emergency module. The PopPackPro is designed to control energy usage and reduce running costs.



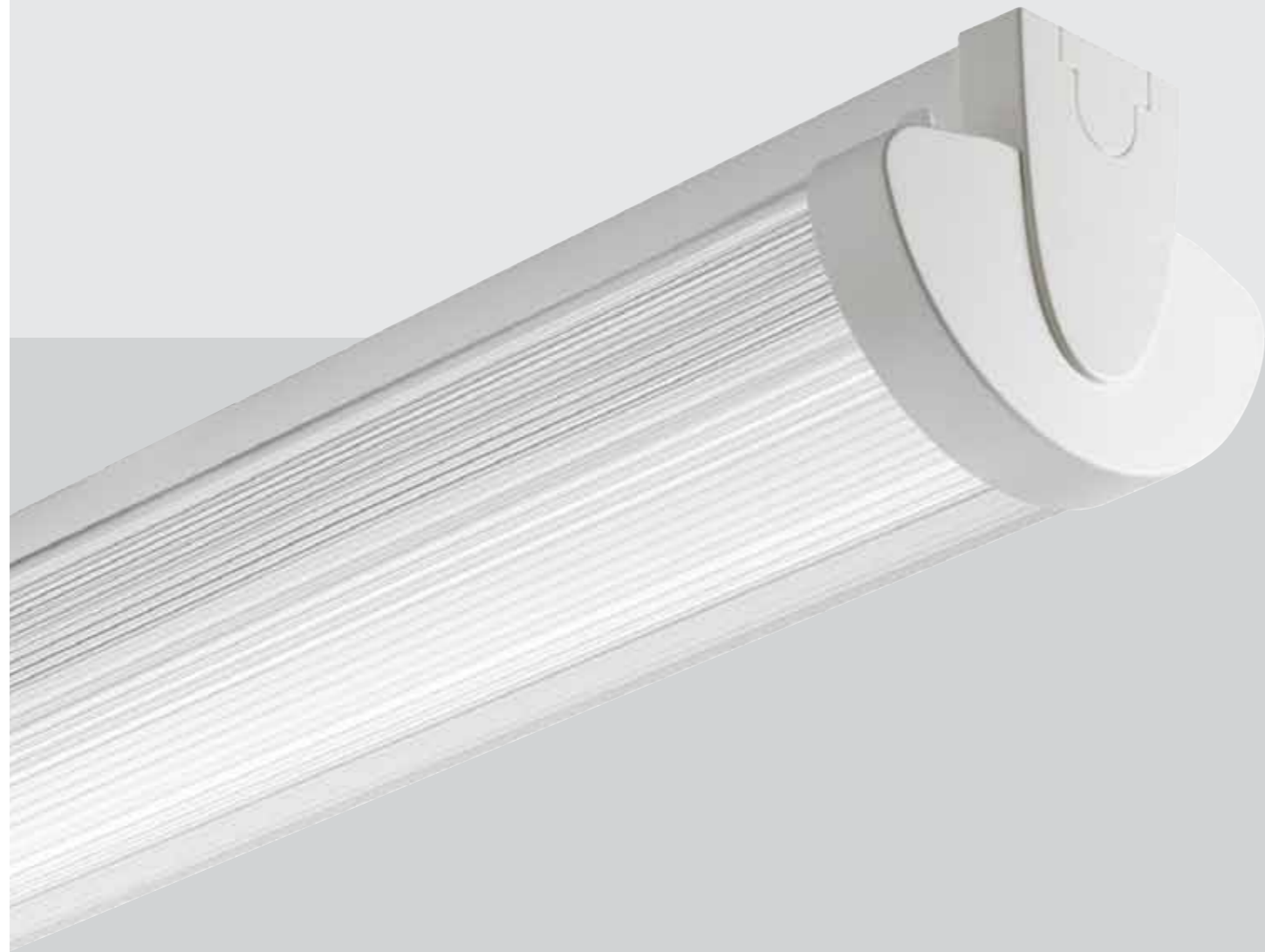
PopPackPro's award-winning design is packed full of ways to make lighting faster, simpler and better for both installers and owners.

Installation guide

Patent pending fixing device improves speed of installation.

Quicker and easier than any batten product I've ever installed...

Paul Dodsworth - CLS Electrical
County Durham, UK



The open spine is designed to provide flexibility and easy access for fast fitting. Snap on the cover tray for a robust, firm installation. The unique fast fix mechanism means that the skilled labour is needed for first fix only. Resulting in quicker, lower cost installation.



Remove the FixExpress mounting plate(s) from the back spine.



Fix mounting plate(s) to the surface/ BESA box, using the fixing template supplied if required.



PopPack Compact uses a single point fix mounting plate with an anti rotate mechanism.



The mounting plates allow quick wiring from BESA fixings

**Install 9 NEW PopPacks
in the same time it used
to take to do 4!**



No Fuss
Rapid Install

PopPackPro Battens and modules

- Contemporary slimline design
- Patented 'FixExpress' mounting plate system ensures rapid installation
- Flexibility - plug and play sensor/emergency modules for safe and simple conversion
- A choice of attachments with outstanding optical performance

Lamps

- LED 1W
- T16 (FDH) G5 14-54W
- T26 (FD) G13 36-70W

Materials/Finish

Batten: pre-coated roll form steel, white
 End caps/lamp holders: injection moulded polycarbonate, white
 FixExpress mounting plates: injection moulded polycarbonate, white
 Sensor and emergency modules: injection moulded polycarbonate
 ClipLine diffusers (T16 only): opal acrylic

Installation/Mounting

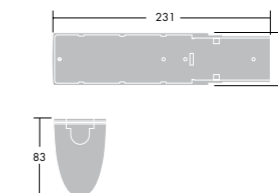
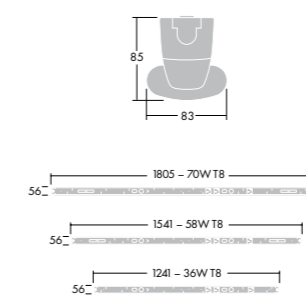
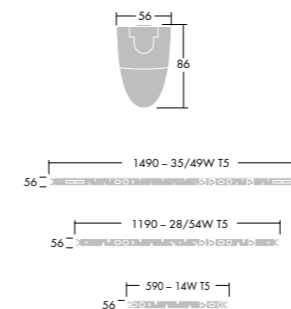
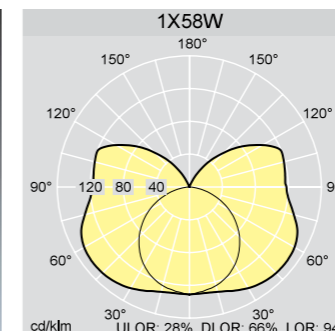
PopPack comes with FixExpress mounting plates to ensure rapid installation directly onto a surface or BESA box (For trunking via 20mm connectors an extended bush is required - available to order ex stock directly from Thorn). All versions have 600mm fixing centres except for 14W versions which are at 445mm centres. Supplied with a screw terminal block that accepts 2x2.5mm² cable per contact pad and is suitable for loop in/loop out wiring. All internal wiring uses halogen free cable. Sensor and emergency modules push fit on the ends, after the end caps have been removed, and are connected with 'one-way' plugs and sockets (not suitable for 14W versions)

Standards



Specification

To specify state:
 T16/T26 fluorescent batten with open gear tray and snap on cover. With quick-fix mounting system and plug and play sensor/emergency flexibility.
 As Thorn PopPackPro.



Ordering Guide Supplied complete with lamp(s) and mounting plates

Description	Wt (kg)	SAP Code
PopPack Pro T16 (T5) batten (High Efficiency Lamp)		
POPPACK PRO 1X14W T16 HF L840	1.00	96548068
POPPACK PRO 1X28W T16 HF L840	1.20	96548069
POPPACK PRO 1X35W T16 HF L840	1.30	96548071
POPPACK PRO 2X28W T16 HF L840	1.20	96548070
POPPACK PRO 2X35W T16 HF L840	1.40	96548072
PopPack Pro T16 (T5) batten (High Output Lamp)		
POPPACK PRO 1X54W T16 HF L840	1.20	96548075
POPPACK PRO 2X54W T16 HF L840	1.20	96548076
PopPack Pro T16 (T5) dimmable batten		
POPPACK PRO 1X49W T16 HFD L840	1.70	96548082
POPPACK PRO 1X54W T16 HFD L840	1.50	96548084
POPPACK PRO 2X49W T16 HFD L840	1.90	96548083
POPPACK PRO 2X54W T16 HFD L840	1.60	96548085
PopPack Pro T16 (T5) batten with ClipLine diffuser		
POPPACK PRO 1X54W T16 HF OP L840	1.50	96548080
POPPACK PRO 2X54W T16 HF OP L840	1.60	96548081
PopPack LED emergency module		
POPPACK LED E3T KIT	0.40	96504902
PopPack SwitchLite module		
POPPACK SLD KIT	0.20	96504903

For more information visit our website www.thornlighting.co.uk and simply search our products.

LumExpress

LumExpress products are specifically designed to meet the day-to-day needs of electrical contractors and are available from Thorn electrical wholesale stockists

PopPackPro Attachments and accessories

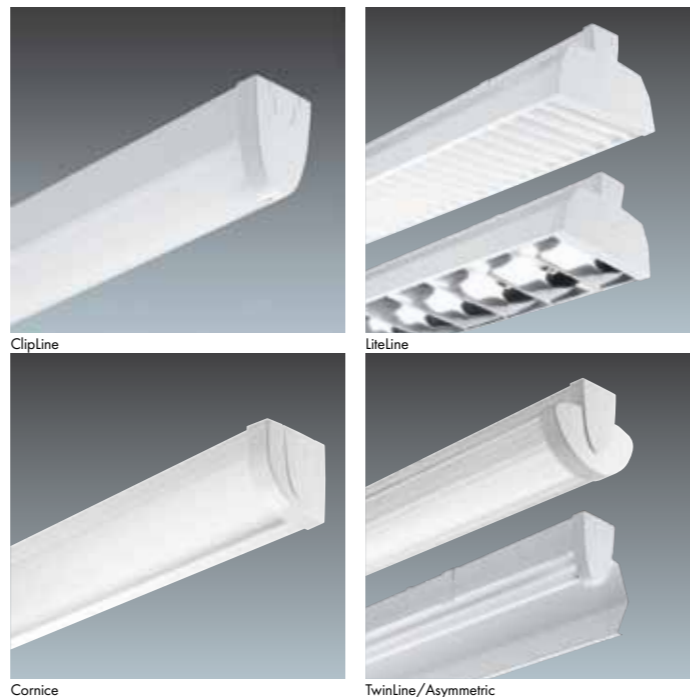
- A choice of reflectors (wide and asymmetric) provides the right task light in the right direction
- Diffuser or louvre attachments are ideal for applications where glare control is required as part of the task lighting
- Robust wire guard - ideal for applications where lamp protection is required from impacts or projectiles
- Cornice attachment is ideal for lighting corridors
- New patented diffuser fixing

Materials/Finish

TwinLine diffusers: clear prismatic acrylic or opal prismatic acrylic with white polycarbonate end caps
 Asymmetric reflector: white steel
 Cornice attachment: white steel, clear prismatic acrylic diffuser with white polycarbonate end caps
 LiteLine white reflector: white steel
 Louvre inserts: white painted steel or Satinbrite aluminium with white polycarbonate end caps
 Wire guard: zinc plated steel wire with white polycarbonate end caps

Specification

To specify
 Cipline diffuser: Acrylic close fitting diffuser with end-cap profile, suitable for single or twin lamp battens
 LiteLine reflector: White painted steel trough reflector with white steel or satinbrite aluminium cross-blade louvre inserts, suitable for single and twin lamp battens.
 Cornice attachment: White steel, corner wall/ceiling fitting attachment with acrylic diffuser suitable for single lamp batten
 Twinline diffuser: Acrylic, prismatic diffuser with quick release lever mounting accessory, suitable for single and twin lamp battens
 Asymmetric reflector: White painted steel asymmetric reflector suitable for single lamp batten
 As Thorn PopPackPro Cipline/LiteLine/Cornice/Twinline/Asymmetric attachment.



Ordering Guide

Description	Wt (kg)	SAP Code
PopPack Pro Cipline opal diffuser		
POPPACK PRO 1X14 DIFF KIT SA AC	0.20	96239193
POPPACK PRO 1X28 DIFF KIT SA AC	0.30	96239195
POPPACK PRO 1X35 DIFF KIT SA AC	0.40	96239197
POPPACK PRO 2X28 DIFF KIT SA AC	0.40	96239196
POPPACK PRO 2X35 DIFF KIT SA AC	0.50	96239198
PopPack Pro TwinLine clear prismatic acrylic diffusers		
POPPACK PRO DIFF 1/2X28/54 CL PR AC		96548089
PopPack Pro TwinLine opal prismatic acrylic diffusers		
POPPACK PRO DIFF 1/2X28/54 OP PR AC		96548094
POPPACK PRO DIFF 1/2X35/49 OP PR AC		96548095
POPPACK PRO DIFF 1/2X36 OP PR AC		96548091
POPPACK PRO DIFF 1/2X58 OP PR AC		96548092
POPPACK PRO DIFF 1/2X70 OP PR AC		96548093
PopPack Pro LiteLine white reflectors		
POPPACK PRO REFL 1X2X28/54 RHW		96548119
POPPACK PRO REFL 1X2X35/49 RHW		96548120
POPPACK PRO REFL 1X2X36 RHW		96548116
POPPACK PRO REFL 1X2X58 RHW		96548117
POPPACK PRO REFL 1X2X70 RHW		96548118
PopPack Pro Wireguard kit for use with LiteLine white reflector		
POPPACK PRO KIT 1X2X28/54 WG (RHW)		96548124
POPPACK PRO KIT 1X2X35/49 WG (RHW)		96548125
POPPACK PRO KIT 1X2X36 WG (RHW)		96548121
POPPACK PRO KIT 1X2X58 WG (RHW)		96548122
POPPACK PRO KIT 1X2X70 WG (RHW)		96548123

Description	Wt (kg)	SAP Code
PopPack Pro LiteLine white reflector with satinbrite louvre insert		
POPPACK PRO REFL DSB 1X2X28/54		96548114
POPPACK PRO REFL DSB 1X2X35/49		96548115
POPPACK PRO REFL DSB 1X2X36		96548111
POPPACK PRO REFL DSB 1X2X58		96548112
POPPACK PRO REFL DSB 1X2X70		96548113
PopPack Pro LiteLine white reflector with white vane louvre insert		
POPPACK PRO REFL LL 1X2X28/54		96548109
POPPACK PRO REFL LL 1X2X35/49		96548110
POPPACK PRO REFL LL 1X2X36		96548106
POPPACK PRO REFL LL 1X2X58		96548107
POPPACK PRO REFL LL 1X2X70		96548108
PopPack Pro Asymmetric reflector		
POPPACK PRO REFL RAS 1X28/54		96548099
POPPACK PRO REFL RAS 1X35/49		96548100
POPPACK PRO REFL RAS 1X36		96548096
POPPACK PRO REFL RAS 1X48		96548097
POPPACK PRO REFL RAS 1X70		96548098
PopPack Pro Cornice diffuser in clear prismatic		
POPPACK PRO ECU 1X28/54 CL PR PC		96548104
POPPACK PRO ECU 1X35/49 CL PR PC		96548105
POPPACK PRO ECU 1X36 CL PR PC		96548101
POPPACK PRO ECU 1X58 CL PR PC		96548102
POPPACK PRO ECU 1X70 CL PR PC		96548103
PopPack Pro Accessories		
POPPACK FIXEXPRESS BRA KIT QTY 20	1.00	96239192

LumExpress

LumExpress products are specifically designed to meet the day-to-day needs of electrical contractors and are available from Thorn electrical wholesale stockists

PopPackPro Compact

- Ideal for small space applications
- Multi packs, ideal for ad-hoc installations
- Flexibility - plug and play sensor/emergency modules for safe and simple conversion
- Single point, 'Fix Express' mounting system for rapid installation

Lamps

- LED 1W
- TC-L (FSDH) 2G11 55W

Materials/Finish

Batten: pre-coated roll form steel, white
 End caps/lamp holders: injection moulded polycarbonate, white
 FixExpress mounting plate: injection moulded polycarbonate
 Sensor and emergency modules: injection moulded polycarbonate, white
 Diffuser: clear prismatic UV stabilised polycarbonate

Installation/Mounting

PopPack Compact comes with one FixExpress mounting plate to ensure rapid installation directly onto a surface or BESA box. Supplied with a screw terminal block which accepts 2.5mm² cable and is suitable for loop in/loop out wiring. Sensor and emergency modules push fit on the ends after the end caps have been removed and are connected with 'one-way' plug and sockets. All internal wiring uses halogen free cable.

Standards



Specification

To specify state:
 Compact fluorescent batten with open gear tray and snap on cover. With quick fix mounting system and plug and play sensor/emergency flexibility
 As Thorn PopPack Compact



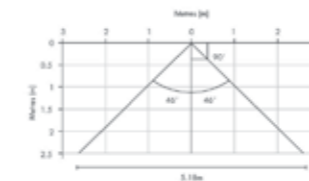
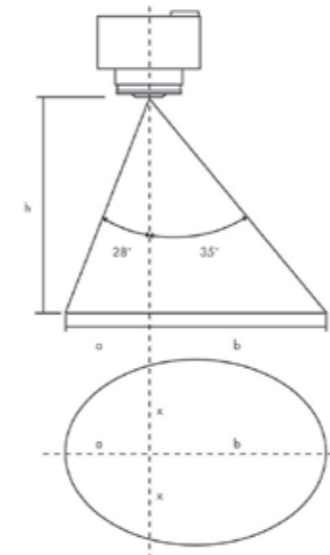
Ordering Guide

Supplied complete with lamp, diffuser and mounting plate

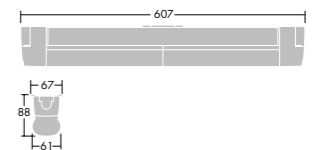
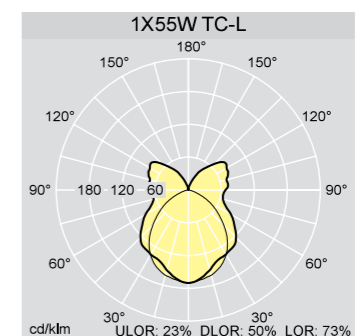
Description	Wt (kg)	SAP Code
PopPack Compact with diffuser		
POPPACK COMPACT 1X55W TC-L HF L840	1.00	96239202
POPPACK COMPACT 1X55W TC-L HF L840 QTY 6	6.00	96504899
PopPack Compact LED emergency module		
POPPACK LED E3T KIT	0.40	96504902
PopPack Compact SwitchLite module		
POPPACK SLD KIT	0.20	96504903

LumExpress

LumExpress products are specifically designed to meet the day-to-day needs of electrical contractors and are available from Thorn electrical wholesale stockists



Emergency & sensor modules compatible with Standard, Cornice and Compact versions



Thorn Lighting Main Offices

Thorn Academy of Light

Durhamgate, Spennymoor
County Durham DL16 6HL, UK
Tel: (44) 1388 420 042
E-mail: academy@thornlighting.com
Website: www.thornacademyoflight.com

Australia

Thorn Lighting Pty Limited
43 Newton Road, Wetherill Park
NSW 2164
Tel: (02) 8786 6000
Fax: (02) 9612 2700
E-mail: infoaustralia@thornlighting.com
Website: www.thornlighting.com.au

Austria

Thorn Licht GmbH
Donau-City-Straße 1,
1220 Wien, Austria
Tel: (43) 1 202 66 11
Fax: (43) 1 202 66 11 82712
E-mail: office.at@thornlighting.com
Website: www.thornlighting.at

Benelux

Rijksweg 47 A
Industriezone Puurs Nr. 442
BE-2870 Puurs, Belgium
Phone: +32 (0)3 860 16 60
Fax: +32 (0)3 860 16 69
e-mail: infobe@thornlighting.com
infonl@thornlighting.com
infolu@thornlighting.com

China

Thorn Lighting (Guangzhou) Limited
No. 12 Lianyun Road, Eastern Section, GETDO
Guangzhou 510530 P.R.China
Tel: (86) 20 3228 2706
Fax: (86) 20 3228 1777
E-mail: sales.cn@thornlighting.com

Thorn Lighting (Tianjin) Co. Ltd
332 Hongqi Road, Tianjin 300190, China
Tel: (86) 22 8369 2303
Fax: (86) 22 8369 2302
E-mail: info.tj@thornlighting.com

Croatia

Dravska 17
HR-42000 Varazdin
Tel: +385 42 290 471
+385 42 290 474
Fax: +385 42 290 470
E-mail: officehr@thornlighting.com
Website: www.thornlighting.com.hr

Czech Republic

Thorn Lighting CS spol. s r.o.,
Pekařská 621/7, 155 00 Praha 5
Czech Republic
Tel: (420) 224 315 252
Fax: (420) 233 326 313
E-mail: thorn.cz@thornlighting.com
Website: www.thornlighting.cz

Denmark

Thorn Lighting A/S
Kanonbådsvej 12B, Holmen,
1437 København K, Denmark
Tel: (45) 76 96 36 00
Fax: (45) 76 96 36 01
E-mail: info.dk@thornlighting.com
Website: www.thornlighting.dk

France

Thorn Europhane SA
156 Boulevard Haussmann,
Cedex 08, Paris 75379, France
Tel: (33) 1 49 53 6262
Fax: (33) 1 49 53 6240
Website: www.thornlighting.fr

Hong Kong

Thorn Lighting (Hong Kong) Limited
Unit 4301, Level 43, Tower 1,
Metroplaza, 223 Hing Fong Road,
Kwai Chung, N.T., Hong Kong
Tel: (852) 2578 4303
Fax: (852) 2887 0247
E-mail: info.hk@thornlighting.com

India

Thorn Lighting India Pvt. Ltd.
Unit No. 404, Western Edge-1
4th Floor, Located at CTS 163A/165
W.E Highway, Borivali (E)
Mumbai - 400 066, India
Board line: +91-22-40481900
Fax: +91-22-40481900
E-mail: international_sales@thornlighting.com
Website: www.thornlighting.in

International Sales

Thorn Europhane SA
156 Boulevard Haussmann
Cedex 08, Paris 75379, France
Tel: (33) 1 49 53 6262
Fax: (33) 1 49 53 6270
Email: international_sales@thornlighting.com
Website: www.thornlighting.com

Ireland

Thorn Lighting (Ireland) Limited
Century House
Harolds Cross Road
Dublin 6W
Tel: (353) 1 4922 877
Fax: (353) 1 4922 724
E-mail: dublinsales@thornlighting.com
Website: www.thornlighting.co.uk

Italy

Thorn Europhane Spa
Via G Di Vittorio, 2, Cadrano di Granarolo,
Bologna 40057, Italy
Tel: (39) 051 763391
Fax: (39) 051 763088
E-mail: info@thornlighting.it
Website: www.thornlighting.it

New Zealand

Thorn Lighting (NZ) Ltd
399 Rosebank Road, Avondale,
Auckland 1026
PO Box 71134, Rosebank,
Auckland 1348
Tel: (64) 9 828 7155
Fax: (64) 9 828 7591
E-mail: info.NZ@thornlighting.com
Website: www.thornlighting.co.nz

Norway

Thorn Lighting AS
Strømsveien 344, 1081 Oslo,
Norway
Tel: (47) 22 82 07 00
Fax: (47) 22 82 07 01
E-mail: info.no@thornlighting.com
Website: www.thornlighting.no

Poland

Thorn Lighting Polska Sp.z o.o.,
Ul. Gazowa 26A, Wrocław 50-513,
Poland
Tel: (48) 71 7833 740
Fax: (48) 71 3366 029
E-mail: thorn.pl@thornlighting.com
Website: www.thornlighting.pl

Russia

Thorn Lighting
Novoslobodskaya Str., 21, office 406
Business Center "Novoslobodskaya 21",
Moscow 127030, Russia
Tel: (7) 495 981 35 41
Fax: (7) 495 981 35 42
E-mail: office.moscow@thornlighting.com
Website: www.thornlighting.ru

Singapore

Thorn Lighting (Singapore) Pte Ltd
5 Kaki Bukit Crescent, 04-02 Koyotech
Building, 416238 Singapore
Tel: (65) 6844 5800
Fax: (65) 6745 7707
E-mail: info.sg@thornlighting.com

Slovenia

Thorn Lighting
Dunajska cesta 159
Ljubljana, SI-1000
Tel: +386 31 388 965
Fax: +386 1 56 09 865
E-mail: office.si@thornlighting.com
Website: www.thornlighting.si

Sweden

Thorn Lighting AB
Industrigratan, Box 305, SE-261 23
Landskrona, Sweden
Tel: (46) 418 520 00
Fax: (46) 418 265 74
E-mail: info.se@thornlighting.com
Website: www.thornlighting.se

United Arab Emirates

Thorn Lighting Ltd Dubai
Al Shoala Building, Office 301,
Block E, Airport road, P.O. Box 1200,
Deira, Dubai, UAE
Tel: (971) 4 2940181
Fax: (971) 4 2948838
E-mail: marketing.mena@thornlighting.com
Website: www.thornlighting.com

United Kingdom

Thorn Lighting Ltd
Durhamgate, Spennymoor,
County Durham, DL16 6HL
Tel: +44 (0) 1388 42 00 42
Fax: +44 (0) 1388 42 01 56
Email: brochures.uk@thornlighting.com
Website: www.thornlighting.co.uk

www.thornlighting.com

Thorn Lighting is constantly developing and improving its products. All descriptions, illustrations, drawings and specifications in this publication present only general particulars and shall not form part of any contract. The right is reserved to change specifications without prior notification or public announcement. All goods supplied by the company are supplied subject to the company's General Conditions of Sale, a copy of which is available on request. All measurements are in millimetres and weights in kilograms unless otherwise stated. Printed on Luxo Light.

Publication No: 520 (I5) Publication Date: 10/11